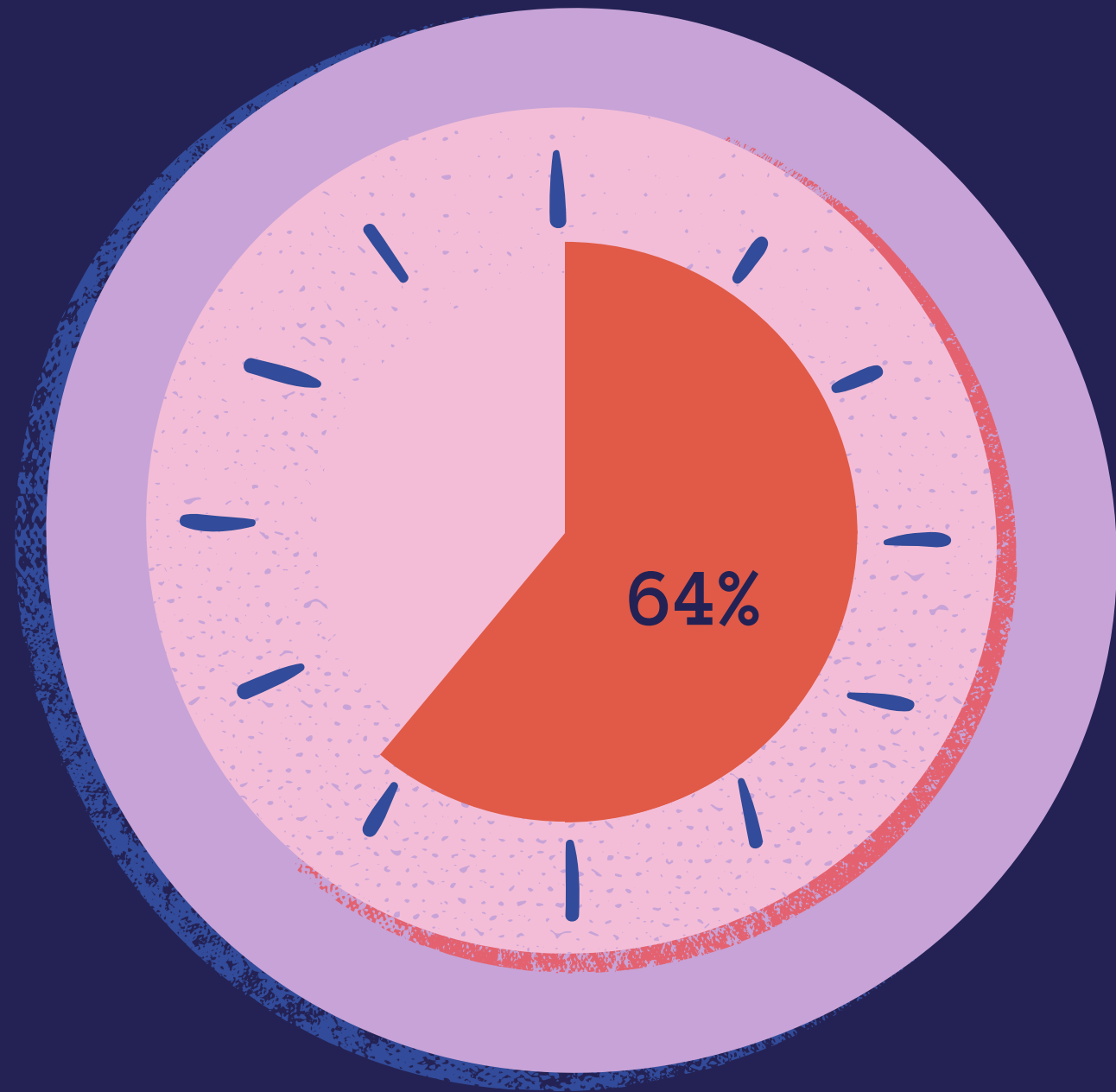




Collective Impact Self Assessment

Results - April 2021



11/17

Collective Impact Core members completed
the Self-Assessment survey.

Methods

Strengths

Mode
(the answer that occurs most often in a data set)

Opportunities for Growth

Mode
(the answer that occurs most often in a data set)

Overall Scoring Document

Heat Map
(darker colors indicate more responses)

Why not your "typical average"?

The average of Agree and Strongly Agree is not Agree-and-a-Half.



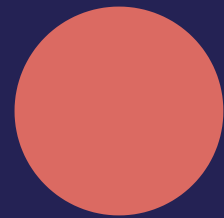
Strengths

Items where the most common response was:
"ready for the next phase"



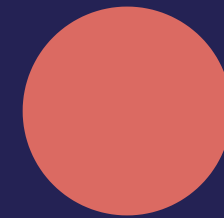
Governance & Infrastructure

The Backbone and Leadership staff are neutral, inclusive, and respected by partners and stakeholders.

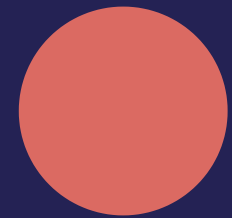


Strategic Planning

Partner organizations are willing to commit to working together, over time, to address the issue.



Community Involvement



Evaluation & Improvement

Opportunities for Growth



Items where the most common response was:
"not started"

Phase 1

Phase 2

Phase 3

Phase 4

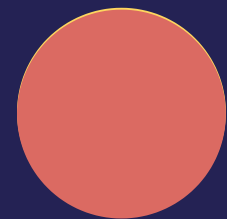
Phase 5

A Collaborative Governance Agreement and Memoranda of Understanding have been developed.

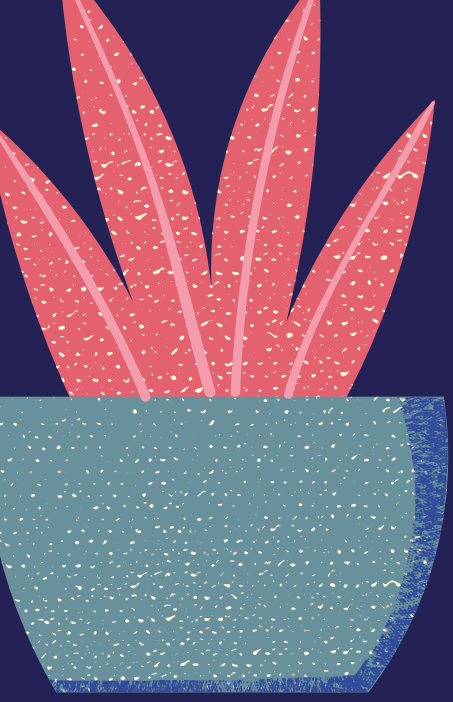
Funding to support the CI effort has been secured for 2-3 years.

Funding aligns with the Collective Impact Initiative's strategies and supports staff and leadership to fulfill responsibilities.

A Collaborative Governance Agreement and Memoranda of Understanding are reviewed and renewed.



Governance & Infrastructure



Opportunities for Growth

Items where the most common response was:
"not started"

Phase 1

Phase 2

Phase 3

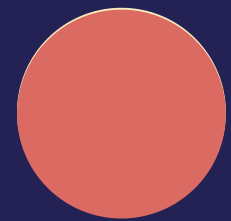
Phase 4

Phase 5

A sustainability plan is being developed.

A policy/advocacy agenda has been developed and partner capacity around it is nurtured.

A sustainability and renewal plan has been developed.



Strategic Planning

Opportunities for Growth

Items where the most common response was:
"not started"



Phase 1

Phase 2

Phase 3

Phase 4

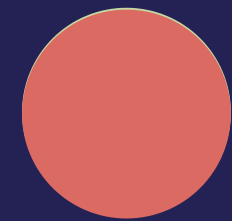
Phase 5

Members with "live experience" have helped shape our common agenda.

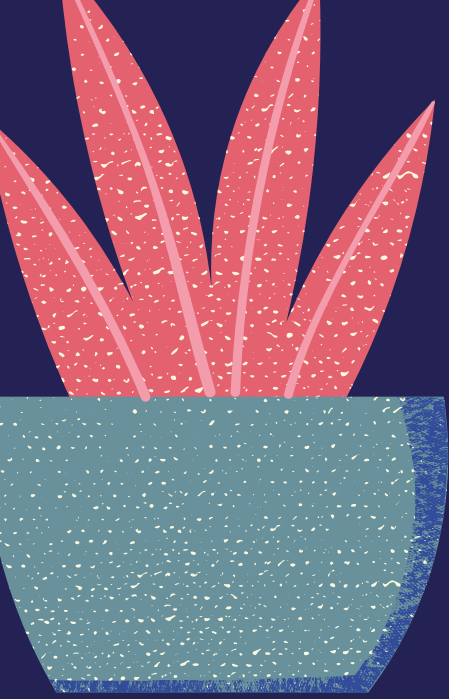
Partners have a data-sharing agreement that supports their ongoing collaboration and are sharing data.

The Steering Committee develops indicators that prove trust and public will is being built.

The community begins to become engaged with the common agenda.



Community
Involvement



Opportunities for Growth

Items where the most common response was:
"not started"

Phase 1

A shared agreement on how progress will be monitored and assessed is being developed.

Phase 2

A developmental evaluation process captures learning regarding context and is used to refine the initiative's design.

Phase 3

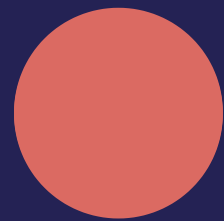
A shared measurement system is established including indicators on progress and approach.

Shared measurement data is collected on a regular basis.

A formal process is established for reviewing the data and making sense of results being achieved.

Phase 4

Phase 5



Evaluation & Improvement

Collective Impact Self-Assessment – OVERALL SCORING DOCUMENT

From the Tamarack Institute

Governance & Infrastructure		Not started	Beginning/ Early Stage	Making Progress	Ready for Next Phase
Phase One: Generate Ideas & Host Dialogues <i>(Pre-Start Up – 12-18 months)</i>		Focus: Engagement & Exploration			
1.	Leadership from multiple perspectives has been engaged to articulate a common agenda.	0	2	6	3
2.	Commitment from Leaders of multiple sectors has been made to work together on the shared issue.	0	1	7	3
3.	Principles and practices guiding how we work together have been endorsed and are reinforced in practice.	1	1	6	3
Phase Two: Initiate Action <i>(From Start Up – 12 months)</i>		Focus: From Idea to Formation			
1.	A Steering Committee that includes diverse voices and perspectives from different sectors is established.	1	2	5	3
2.	Staff supporting this work are neutral and inclusive.	0	2	5	4
3.	A Collaborative Governance agreement and memorandum of understanding have been developed.	4	1	4	2
4.	Boards / Leadership teams from participating organizations have endorsed – and are actively involved in – this initiative.	0	4	5	2
Phase Three: Organize for Impact <i>(From 2-3 years)</i>		Focus: Experimentation & Growth			
1.	The Backbone ensures alignment of activity across the overall effort.	0	1	6	4
2.	Funding to support the CI effort has been secured for 2-3 years.	5	1	3	1
3.	The Steering Committee and Backbone identify and engage new partners.	0	4	6	1
4.	The Steering Committee and Backbone align their work with other community efforts.	0	0	9	2
Phase Four: Implementation <i>(From 2-4 years)</i>					
1.	Leadership & Backbone staff are skilled in strategic visioning and problem-solving.	0	0	7	4
2.	Funding aligns with the CI initiative’s strategies and supports staff and leadership to fulfill responsibilities.	4	2	4	0
3.	Leadership of the CI reflects multiple sectors and perspectives, including the voice of “lived experience.”	2	3	5	1
4.	The Backbone and Leadership staff are neutral, inclusive, and respected by partners and stakeholders.	0	0	4	7
Phase Five: Review and Renew <i>(From 4 years ++)</i>		Focus: Sustain and Renew			
1.	The Steering Committee initiates a review and renewal process for the initiative.	2	0	7	2
2.	Staff supporting this work support the renewal process.	2	0	7	2
3.	A Collaborative Governance agreement and memorandum of understanding are reviewed and renewed.	4	2	3	2
4.	Boards/ Leadership teams from participating organizations have endorsed – and are actively involved in – the renewal process.	2	3	5	1

Collective Impact Self-Assessment – OVERALL SCORING DOCUMENT

From the Tamarack Institute

Strategic Planning		Not started	Beginning/ Early Stage	Making Progress	Ready for Next Phase
Phase One: Generate Ideas & Host Dialogues <i>(Pre-Start Up – 12-18 months)</i>		Focus: Engagement & Exploration			
1.	Partner organizations and community members are aware of our CI initiative and its common agenda.	0	3	6	2
2.	We have articulated a common understanding of our shared problem and it is informed by data.	0	1	8	2
3.	Clear goals and priorities for our common agenda are being identified.	0	5	5	1
4.	Partner organizations are willing to commit to working together, over time, to address this issue.	0	2	4	5
Phase Two: Initiate Action <i>(From Start Up – 12 months)</i>		Focus: From Idea to Formation			
1.	Partners have reached consensus on the ultimate goal and have committed to a shared vision for change.	0	4	3	4
2.	Partners are engaged and contributing to a collective plan of action that unifies – and leverages – their distinct activities.	2	3	6	0
3.	Partners have designed a user-friendly, shared measurement system in a participatory and transparent way.	3	5	3	0
4.	Structures and processes to keep partners and external partners well-informed about the CI effort are established.	1	5	5	0
Phase Three: Organize for Impact <i>(From 2-3 years)</i>		Focus: Experimentation & Growth			
Phase Four: Implementation <i>(From 2-4 years)</i>					
1.	An implementation blue print is in place and all partners agree to the blue print.	2	5	2	2
2.	Quick wins are identified as progress on the blue print is made.	2	4	4	1
3.	The Steering Committee begins to document policy shifts around the SC and working group tables.	3	5	3	0
4.	A sustainability plan is being developed.	4	4	3	0
Phase Five: Review and Renew <i>(From 4 years ++)</i>		Focus: Sustain and Renew			
1.	CI Partners are kept informed and inspired by the success of the CI initiative.	1	4	5	1
2.	Steering Committee and Backbone establish relationships with policy-makers.	3	2	5	1
3.	A policy/ advocacy agenda has been developed and partner capacity around it is nurtured.	5	3	3	0
4.	A sustainability and renewal plan has been developed for the CI initiative.	5	3	3	0

Collective Impact Self-Assessment – OVERALL SCORING DOCUMENT

From the Tamarack Institute

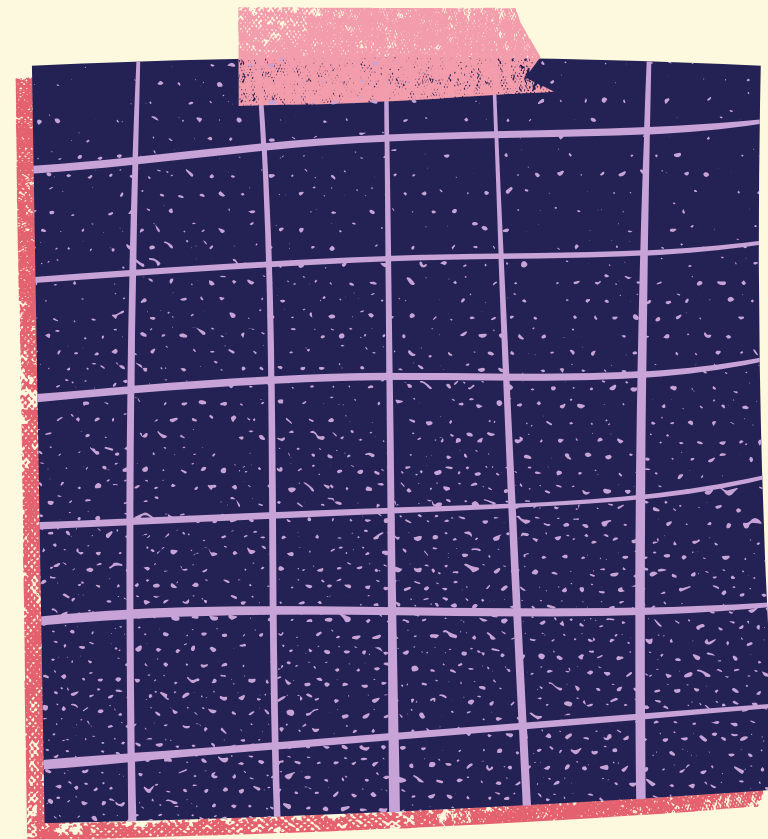
Community Involvement		Not started	Beginning/ Early Stage	Making Progress	Ready for Next Phase
Phase One: Generate Ideas & Host Dialogues <i>(Pre-Start Up – 12-18 months)</i>		Focus: Engagement & Exploration			
1.	We have convened conversations with diverse voices and perspectives from multiple sectors.	0	4	7	0
2.	Partners and the community can understand and articulate the problem we want to address.	1	6	3	1
3.	Partners are sharing quantitative and qualitative data to inform our understanding of our issue.	2	6	2	1
4.	Partners feel a collective responsibility for the issue and generating results around it.	1	5	4	1
Phase Two: Initiate Action <i>(From Start Up – 12 months)</i>		Focus: From Idea to Formation			
1.	Members with “lived experience” have helped shape our common agenda.	5	4	2	0
2.	Geographical boundaries and population targets to be addressed have been set and are clear for all partners.	3	5	3	0
3.	Partners accurately describe the goals of our initiative.	0	6	5	0
4.	Partners understand the value of shared measurement & their role in it.	1	4	6	0
5.	Partners have endorsed an action plan with specific activities each partner is committed to implementing.	3	3	5	0
Phase Three: Organize for Impact <i>(From 2-3 years)</i>		Focus: Experimentation & Growth			
1.	Partners show commitment to our common agenda.	0	2	7	2
2.	Partners have a data sharing agreement that supports their ongoing collaboration and are sharing data.	5	2	4	0
3.	Partners have clear approaches / goals for their own contributions to their working group.	2	5	3	1
4.	Partners understand the roles of other working groups and how they support the common agenda.	1	6	3	1
Phase Four: Implementation <i>(From 2-4 years)</i>					
1.	An engagement strategy is implemented that reaches broadly across the community.	4	6	1	0
2.	The Steering Committee develops indicators that prove that trust and public will is being built.	5	4	2	0
3.	The community begins to become engaged with the common agenda of the collaborative effort.	6	4	0	0
4.	The CI initiative convenes meetings with stakeholders and integrates their input into the overall strategy.	2	4	5	0
Phase Five: Review and Renew <i>(From 4 years ++)</i>		Focus: Sustain and Renew			
1.	Partners demonstrate flexibility and willingness to adapt strategies and tactics to realize our common agenda.	1	2	7	1
2.	Partners re-assess indicators, data collection methods, and approaches to disseminating results and learning.	1	5	5	0
3.	Partners use data to guide decision-making in their own organization.	1	2	6	2
4.	The CI initiative convenes meetings with stakeholders and integrates their input into the overall strategy.	2	3	5	1

Collective Impact Self-Assessment – OVERALL SCORING DOCUMENT

From the Tamarack Institute

Evaluation & Improvement		Not started	Beginning/ Early Stage	Making Progress	Ready for Next Phase
Phase One: Generate Ideas & Host Dialogues		<i>(Pre-Start Up – 12-18 months)</i>		Focus: Engagement & Exploration	
1.	The importance of continuous and shared learning to the success of working collaboratively is understood.	0	1	8	2
2.	A shared agreement on how progress will be monitored and assessed is being developed.	4	3	4	0
3.	The consensus around a shared vision and common agenda is informed by data.	0	2	9	0
4.	Steering Committee and Backbone staff are thought-leaders and ambassadors for the initiative – building hope.	0	1	7	3
Phase Two: Initiate Action		<i>(From Start Up – 12 months)</i>		Focus: From Idea to Formation	
1.	A set of early performance measures and a system to track them has been established to monitor progress.	3	4	3	1
2.	A developmental evaluation process captures learning regarding context and is used to refine the initiative’s design.	5	3	3	0
3.	Partners regularly share insights and lessons about assumptions, successes, failures, and promising practices.	1	2	6	2
4.	Community input and feedback is continually sought and used to inform the CI initiative in its ongoing work.	1	6	2	2
Phase Three: Organize for Impact		<i>(From 2-3 years)</i>		Focus: Experimentation & Growth	
1.	Partners adapt best practices from other fields/ geographies to advance their work.	1	3	6	1
2.	Partners publicly discuss the progress and learning of the initiative and advocate for its goals.	1	5	3	2
3.	Partners raise questions and clarify or question assumptions and beliefs.	1	1	7	2
4.	Partner organizations report improvements in knowledge and effectiveness due to the initiative’s work.	2	2	5	2
Phase Four: Implementation		<i>(From 2-4 years)</i>			
1.	A shared measurement system is established, including indicators on progress and approach.	5	2	3	1
2.	Shared measurement data is collected on a regular basis.	5	2	3	1
3.	A formal process is established for reviewing the data and making sense of the results being achieved.	5	2	4	0
4.	Changes in individual attitudes and/or behaviors – or in the public, media – align with the goals of the CI initiative.	2	4	5	0
Phase Five: Review and Renew		<i>(From 4 years ++)</i>		Focus: Sustain and Renew	
1.	Professional standards are evolving to support the goals of the CI initiative.	2	5	4	0
2.	The issue(s) championed by the CI initiative are viewed as a priority & receive greater attention by system actors.	1	4	6	0
3.	Formal and informal organizational policies have changed as a result of the CI initiative’s work.	2	7	2	0

Next Steps?



What needs to be done?

Who will do it?

By when?