



Lenawee Health Network

Mission: To improve the health and well-being of the community.

CHIP Goal: Cultivate a resilient community equipped with equitable & accessible resources empowering all to reach their highest potential for health.

Today's Agenda

Minutes – January 12, 2023

8:00 – 8:05 **Call to Order**

- Purpose/Mission
- Welcome & Introductions
- Inspiration & Appreciation

8:05 – 8:10 **Leadership Updates**

- COVID-19 Updates
- Collective Impact Core: Trauma & Resilience
 - Trauma Informed Temperature Check
- [2023 LHN Participant Survey](#)

8:10 – 8:40 **CHIP Strategy & Collaborations**

- Spotlight Presentation(s):
 - Michigan Works! – programs/services/collaborations

8:40 - 8:55 **Emerging Issues**

- February:
 - [Black History Month](#)
 - [National Cancer Prevention Month](#)
 - [American Heart Month](#)
- March:
 - [National Women's History Month](#)
 - [National Nutrition Month](#)
 - [2025-2030 Dietary Guidelines](#) – Committee Meeting
 - [National Colorectal Cancer Month](#)
 - [National Kidney Month](#)
 - [National Social Work Month](#)

- Agency Updates
- Open Discussion

9:00 **Meeting Adjourned**

Inspiration & Appreciation

- “In a gentle way, you can shake the world.” – Mahatma Gandhi
- Appreciation: “This is a Jennifer Ferrari inspiration post. I’ve been noticing Jen’s commitment to community work lately: engaging in more groups than I can count; donating hygiene packs for this year’s PIT Count; supporting people impacted by Riverview Terrace with lunches and learning opportunities; and really taking the time to get to know people. Doing this work with her is a joy! Thank you, Jen!”
- Please send any submissions recognizing our partners or residents for their great work to Frank.Nagle@ProMedica.org for a feature in our upcoming meetings.
- Submit by the 4th Friday of each month.



LHN LEADERSHIP

Monthly Updates

COVID-19: Lenawee Update

Lenawee County Active Cases			
	Lab-Confirmed	Probable	Total
New Cases This Week	26	32	58
Total Active Cases	28	25	53

Lenawee County Cumulative Cases				
	Lab-Confirmed	Probable	Total	Percentage of Cumulative Cases
Male	10,755	3,137	13,892	45%
Female	12,732	3,978	16,710	55%
Discontinued from isolation	23,128	7,057	30,185	99%
Deaths	331	33	364	1%
Total	23,487	7,115	30,602	

Lenawee County Active Cases			
	Lab-Confirmed	Probable	Total
New Cases This Week	105	120	225
Total Active Cases	63	31	94

Lenawee County Cumulative Cases				
	Lab-Confirmed	Probable	Total	Percentage of Cumulative Cases
Male	10,709	3,035	13,744	45%
Female	12,685	3,827	16,512	56%
Discontinued from isolation	23,007	6,799	29,806	99%
Deaths	324	32	356	1%
Total	23,394	6,862	30,256	

Vaccinations in Lenawee County, Michigan

People Vaccinated	At Least One Dose	Completed Primary Series	Updated (Bivalent) Booster Dose
Total	56,169	53,586	
% of Total Population	57.1%	54.4%	
Population ≥ 5 Years of Age	N/A	53,546	9,028
% of Population ≥ 5 Years of Age	N/A	57.4%	9.7%
Population ≥ 12 Years of Age	N/A	52,630	8,912
% of Population ≥ 12 Years of Age	N/A	61.6%	10.4%
Population ≥ 18 Years of Age	N/A	49,726	8,753
% of Population ≥ 18 Years of Age	N/A	63.8%	11.2%
Population ≥ 65 Years of Age	N/A	17,236	5,199
% of Population ≥ 65 Years of Age	N/A	90%	27.2%

Vaccinations in Lenawee County, Michigan

People Vaccinated	At Least One Dose	Completed Primary Series	Updated (Bivalent) Booster Dose
Total	56,124	53,524	
% of Total Population	57%	54.4%	
Population ≥ 5 Years of Age	N/A	53,486	8,451
% of Population ≥ 5 Years of Age	N/A	57.4%	9.1%
Population ≥ 12 Years of Age	N/A	52,574	8,349
% of Population ≥ 12 Years of Age	N/A	61.5%	9.8%
Population ≥ 18 Years of Age	N/A	49,674	8,202
% of Population ≥ 18 Years of Age	N/A	63.7%	10.5%
Population ≥ 65 Years of Age	N/A	17,218	4,890
% of Population ≥ 65 Years of Age	N/A	89.9%	25.5%

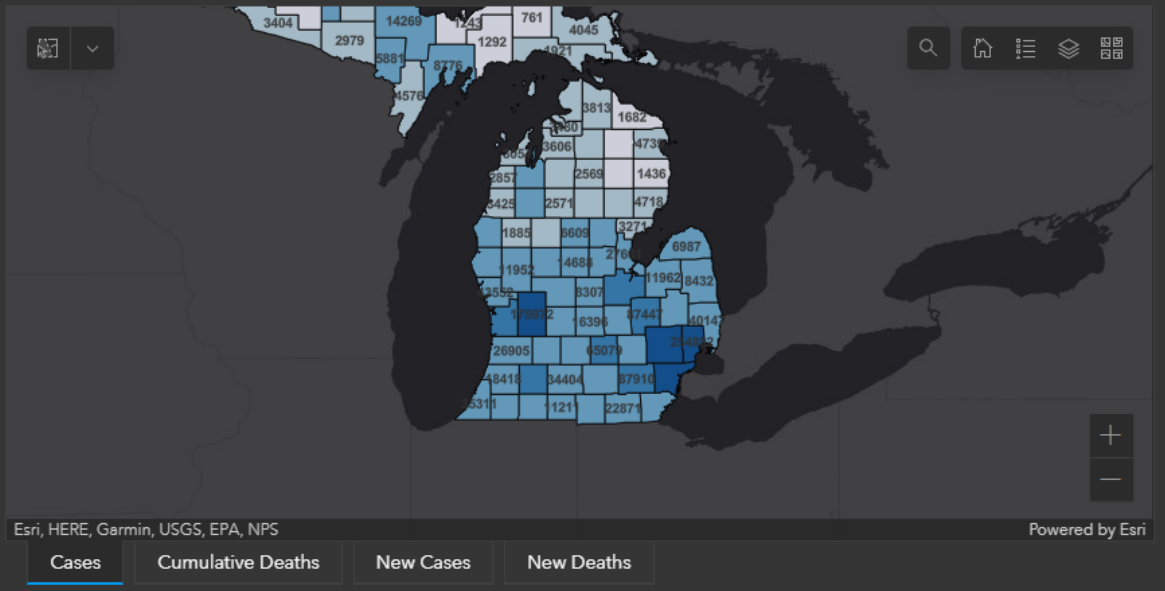
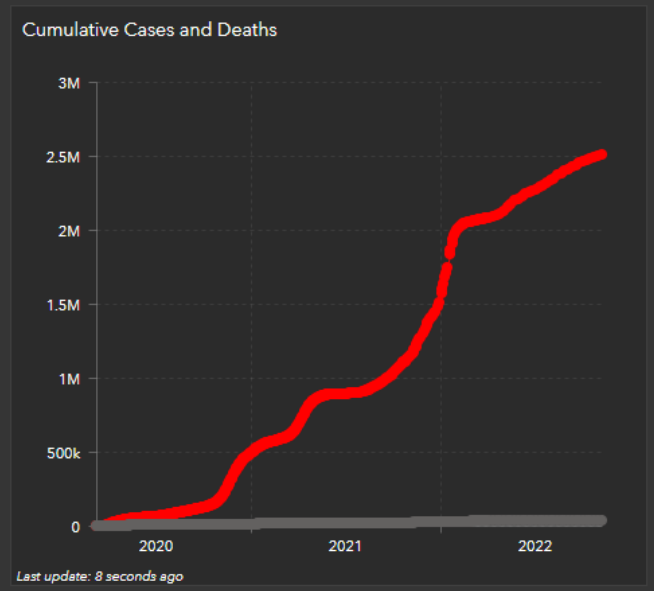
Learn more about the [COVID-19 Vaccine](#).

Michigan COVID-19 Summary

EFFECTIVE 11/10/2022 THIS DASHBOARD IS NO LONGER BEING UPDATED

Total Confirmed Cases
✳ 2,507,475
 Michigan

Last update: 5 seconds ago



Cases by County

467,672 Cases	WAYNE County
319,646 Cases	OAKLAND County
254,882 Cases	MACOMB County
175,972 Cases	KENT County
87,910 Cases	WASHTENAW County
87,447 Cases	GENESEE County

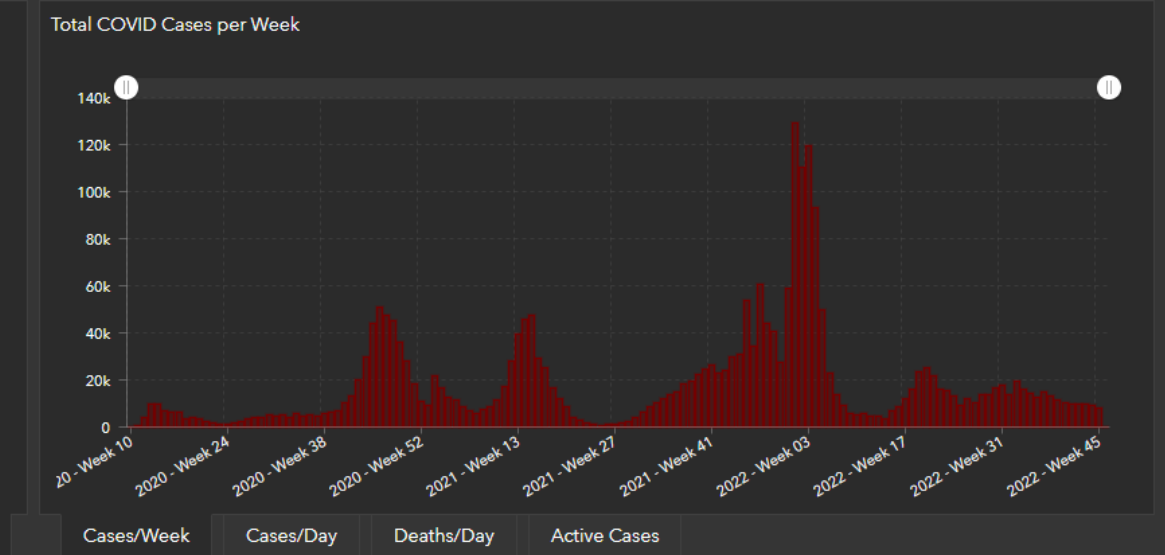
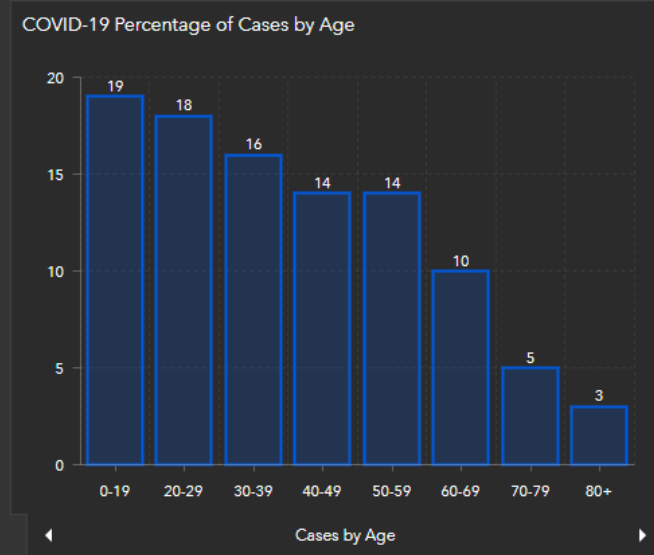
Last update: 5 seconds ago

Deaths Michigan
♥ 35,984

Last update: 7 seconds ago

[Total Deaths](#) | [Deaths Summary](#)

Last Update: 11/9/22 3:00 pm



Deaths per County

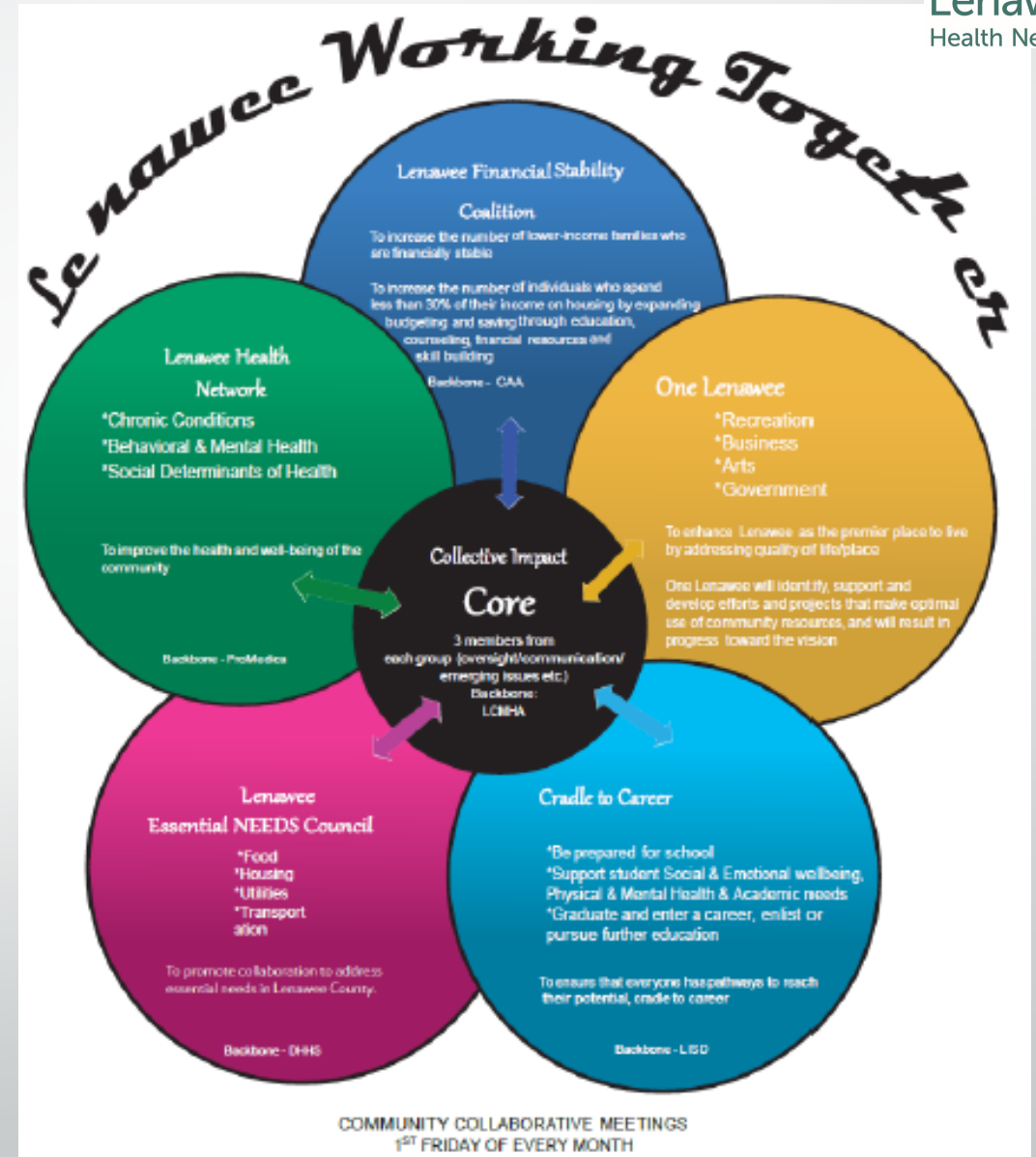
Deaths: 7,953	WAYNE County
Deaths: 3,988	MACOMB County
Deaths: 3,854	OAKLAND County
Deaths: 1,702	GENESEE County
Deaths: 1,462	KENT County
Deaths: 970	SAGINAW County

Last update: 5 seconds ago

Michigan COVID-19 Sources

- Michigan.gov
 - <https://www.michigan.gov/coronavirus/>
- Lenawee County Health Department
 - <https://www.lenawee.mi.us/983/COVID-19---Vaccine>
 - <http://www.lenawee.mi.us/917/2019-Novel-Coronavirus>
 - <https://www.lenawee.mi.us/931/COVID-19-Case-Testing-Information>
 - <https://mistartmap.info/cdc-indicators?area=county%3Alenaweeinformation>

Collective Impact Core Trauma & Resilience



Guiding Principles of Trauma-Informed Care

(Adopted from Trauma-Informed Oregon's Guiding Principles of Trauma Informed Care)

1. Safety: People feel physical and psychologically safe.

- Catholic Charities shared they have made safety installations to improve safety for staff and consumers. Installations include cameras, enhanced parking lot lighting, operational adjustments to mitigate potential risk between client and staff.
- Department on Aging shared that they have a room dedicated to engaging directly and privately with people. This room cultivates a safe and comfortable environment for constituents.
- Community Mental Health shared that their organization recommended a system/policy change for health insurance to ensure newly hired employees in need of their insurance do not go without.
- Region 2 AAA shared that they added a layer of engagement with participants registering for workshops to ask if they are familiar with how to access and utilize the online platform which the workshop will take place. If people are not as familiar, they will work directly with them to orient the participant to the various functions, so they are comfortable the day of the workshop.
- MSU-Extension shared that they use the Voice by Choice methodology to ensure participants in workshops do not feel put on the spot to participate, answer questions and to engage. It cultivates safety and avoids putting participants in uncomfortable situations.

2. Trustworthiness & Transparency: Decisions are made with transparency and with the goal of building and maintaining trust among the people impacted.

- Jackie Bradley, Lenawee Community Mental Health Authority, shared their organization developed a new strategic plan which included staff sessions and several components along the process to gather staff feedback, recommendations and to implement solutions in response.
- MSU-Extension shared that the Continuum of Care has cultivated relationships to incorporate representation from individual(s) with lived experience in their meetings.

1. Peer Support and Mutual Self-Help: Opportunities are created for acceptance, understanding, and validation from people with shared experiences.

- At Interconnections Drop-In Center, everyone is peer support for one another. Several people were affected by Riverview Terrace closure. One person was experiencing homelessness and the staff and team provided support to the individual who was able to receive services to avoid homelessness.
- Department on Aging shared they are pivoting the vision of Day Break Programming to focus on peer support for older adults.
- The Human Services Building recently did an active shooter training. Following the training, Community Mental Health offered crisis debriefing.

2. Collaboration & Mutuality: Healing happens in relationship and in the meaningful sharing of power and decision making.

- Laura Pipis shared that Lynne Punnett is leading an effort to secure housing for Riverview Terrace residents that have been displaced. In search of housing, Lynne included residents in the task force to explore suitable options and to contribute lived experience and perspective to the decision-making process.
- Martha York shared that the Matter of Balance program includes a section within the 4th session that dedicates time for participants to share what they have gone through with their group. Participants have shared that it has helped to heal from trauma's they have experienced.
- Cari Rebottaro shared that working with Caregivers frequently encounters children that may have decision making power on behalf of their parent(s) but continue to include their parent(s) in the decision-making process so they are informed, empowered and can avoid trauma.

3. Empowerment, Voice & Choice: Every person's experience is unique and requires an individualized approach. This builds on what individuals and communities have to offer, rather than responding to received deficits.

- Marth York shared that Region 2 Area Agency on Aging is hosting a Dementia Minds event where people with dementia are having a chance to share their stories and give voice to their experience of living with dementia. The aim is to dispel the "tragedy narrative" that many stigmatize dementia as being, and instead show how they still have things to contribute in our society. Being part of this Dementia Minds group and hosting a public event that shares their stories gives them a sense of purpose as they work to educate the greater community on how to value and include people with dementia."
- Laura Schultz Pipis shared that during the community's response in supporting residents at Riverview Terrace, DHHS, Department on Aging, Share the Warmth and other organizations dedicated resources to ensure all residents were connected to case worker that could support their individual needs. The team also formed a taskforce and were able to secure resident participation to ensure their voice was at the table and part of shaping the decisions and supports provided.

4. Cultural, Historical, & Gender Issues: The Community actively overcomes cultural stereotypes and biases, is culturally responsive, leverages the healing value of traditional cultural connections, and recognizes and addresses historical trauma.

- MSU-Extension shared that their organization collects demographic, race/ethnicity, gender, and similar information as part of participants registering for their programs. They identified opportunity to update these questions to ensure their processes are inclusive of culture, history, and gender. This was shared as an example of how organizations embrace culture, history, and gender inclusivity in their operations.
- Lenawee Community Mental Health shared that their organization changed signage in their bathrooms to be more gender inclusive. There was previous signage that stated not to flush feminine products in the toilets. This signage has been updated to state not to flush any products other than toilet paper. This is an example of their organization cultivating inclusivity into their physical environment.

Guiding Principles of Trauma-Informed Care

(Adopted from Trauma-Informed Oregon's Guiding Principles of Trauma Informed Care)

- Temperature Check Document Review:
 - 4 surveys completed. Thank you!
 - Please contribute your feedback -> <https://forms.gle/YuoAYxbNm8gMqXfL7>
- Discussion: LHN ACE's Training with Community Action Agency

Spotlight Presentation

Michigan Works Southeast

The screenshot shows the Michigan Works Southeast website. At the top left is the logo. The navigation bar includes: Employers, Jobseekers, Events, Resources, About Us, Contact Us, and a search icon. The main content area is titled 'What We Offer' and is split into two columns: 'For Employers' and 'For Job Seekers'. Each column lists services with icons and brief descriptions. A red button at the bottom says 'Contact Us to Get Started!'.

Michigan Works Southeast

Employers | Jobseekers | Events | Resources | About Us | Contact Us | Search

What We Offer

For Employers

- Qualified Talent**
We help employers fill thousands of positions each year!
- Grant Opportunities**
Offset the cost to expand and train your workforce.
- Corporate Assistance Program**
Navigate financial hardship with expert consulting.
- Free Job Posting**
Share job opportunities for free with MiTalent. We can even post for you!

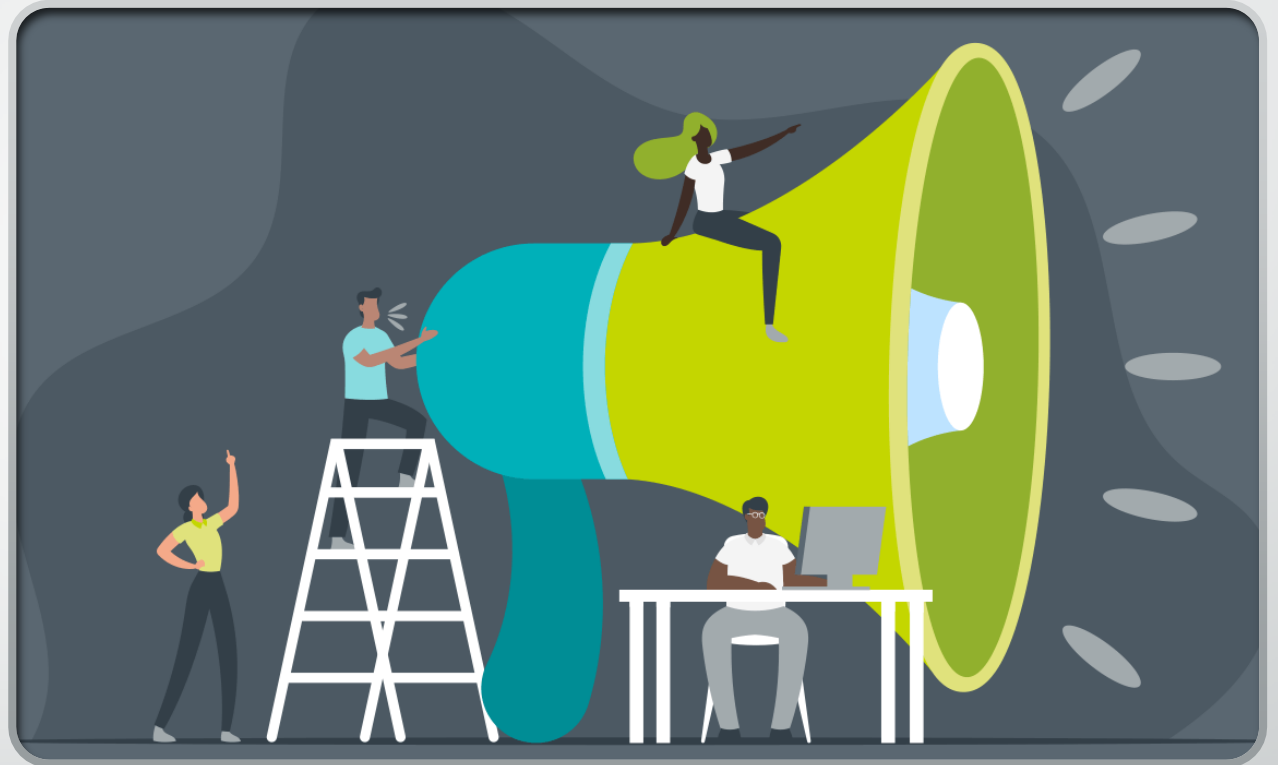
For Job Seekers

- Job Search Strategies**
Learn how to go beyond the job boards and network effectively.
- Resume & Cover Letter Assistance**
Develop a high-quality resume and cover letter that will get results.
- Training Opportunities**
Get connected to training programs to increase your skills and pay.
- Free Workshops & Events**
Register today for one or more of our virtual workshops!

[Contact Us to Get Started!](#)

February Advocacy

- February:
 - Black History Month
 - National Cancer Prevention Month
 - American Heart Month



March Advocacy

- March:
 - National Women's History Month
 - National Nutrition Month
 - 2025-2030 Dietary Guidelines — Committee Meeting
 - National Colorectal Cancer Month
 - National Kidney Month
 - National Social Work Month



Agency Updates & Discussion

<https://www.unitedwaymlc.org/21-week-equity-challenge>

Thank you for joining our meeting today!

Next meeting March 09, 2023
8:00 AM – 9:00 AM
Via – Zoom

[LHN Google Drive](#)