



Lenawee Health Network

Mission: To improve the health and well-being of the community.

CHIP Goal: Cultivate a resilient community equipped with equitable & accessible resources empowering all to reach their highest potential for health.

Today's Agenda

Minutes – November 10, 2022

8:00 – 8:05 **Call to Order**

- Purpose/Mission
- Welcome & Introductions
- Inspiration & Appreciation

8:05 – 8:25 **Leadership Updates**

- COVID-19 Updates
- Collective Impact Core: Trauma & Resilience
 - 6 Guiding Principles
 - Cultural, Historical, & Gender Issues

8:25 – 8:40 **CHIP Strategy & Collaborations**

- Spotlight Presentation:
 - [CDC PLACES: Local Data for Better Health](#)
 - [CDC Social Vulnerability Index: Mapping Tool](#)
 -
- December:
 - [World AIDS Day: Rock the Ribbon Campaign](#) (12/1)
 - [National Influenza Vaccination Week](#) (12/5-12/9)

8:40 - 8:55 **Emerging Issues**

- Agency Updates
- Open Discussion

9:00 **Meeting Adjourned**

Inspiration & Appreciation

- “New Years Day. A fresh start. A new chapter in life waiting to be written. New questions to be asked, embraced, and loved. Answers to be discovered in this transformative year of delight and self-discovery. Today, carve out a quite interlude for yourself in which you dream, pen in hand. Only dreams give birth to reach change.” – Sara Ban Breathnach
- **Appreciation:** Thank you for participating in 2022 LHN meetings, for distributing resources through your organizations and for your willingness to dedicate this hour each month to explore collaborations and meaningful action that addresses the community’s health needs.
- Please send any submissions recognizing our partners or residents for their great work to Frank.Nagle@ProMedica.org for a feature in our upcoming meetings.
- Submit by the 4th Friday of each month.

LHN LEADERSHIP

Monthly Updates

COVID-19: Lenawee Update

| Lenawee County Active Cases | | | |
|-----------------------------|---------------|-----------|-----------|
| | Lab-Confirmed | Probable | Total |
| New Cases This Week | 34 | 34 | 68 |
| Total Active Cases | 45 | 25 | 70 |

8

| Lenawee County Cumulative Cases | | | | |
|---------------------------------|---------------|--------------|---------------|--------------------------------|
| | Lab-Confirmed | Probable | Total | Percentage of Cumulative Cases |
| Male | 10,573 | 2,878 | 13,451 | 44% |
| Female | 12,503 | 3,599 | 16,102 | 56% |
| Discontinued from isolation | 22,709 | 6,421 | 29,130 | 99% |
| Deaths | 322 | 31 | 353 | 1% |
| Total | 23,076 | 6,477 | 29,553 | |

| Lenawee County Vaccine Data | | |
|-----------------------------|---------------------|--------------------------|
| As of 11/27/2022 | | |
| | Number of residents | % of eligible population |
| First Vaccine Dose | 56,021 | 56.9% |
| Fully Vaccinated | 53,385 | 54.2% |
| Boosted | 28,732 | 53.8% |

Lenawee County Vaccine Data Source

| Lenawee County Active Cases | | | |
|-----------------------------|---------------|-----------|------------|
| | Lab-Confirmed | Probable | Total |
| New Cases This Week | 48 | 52 | 100 |
| Total Active Cases | 57 | 50 | 107 |

| Lenawee County Cumulative Cases | | | | |
|---------------------------------|---------------|--------------|---------------|--------------------------------|
| | Lab-Confirmed | Probable | Total | Percentage of Cumulative Cases |
| Male | 10,463 | 2,843 | 13,306 | 45% |
| Female | 12,400 | 3,557 | 15,957 | 55% |
| Discontinued from isolation | 22,488 | 6,321 | 28,809 | 98% |
| Deaths | 318 | 29 | 347 | 1% |
| Total | 22,863 | 6,400 | 29,263 | |

| Lenawee County Vaccine Data | | |
|-----------------------------|---------------------|--------------------------|
| As of 11/07/2022 | | |
| | Number of residents | % of eligible population |
| First Vaccine Dose | 55,923 | 56.8% |
| Fully Vaccinated | 53,270 | 54.1% |
| Boosted | 28,479 | 53.5% |

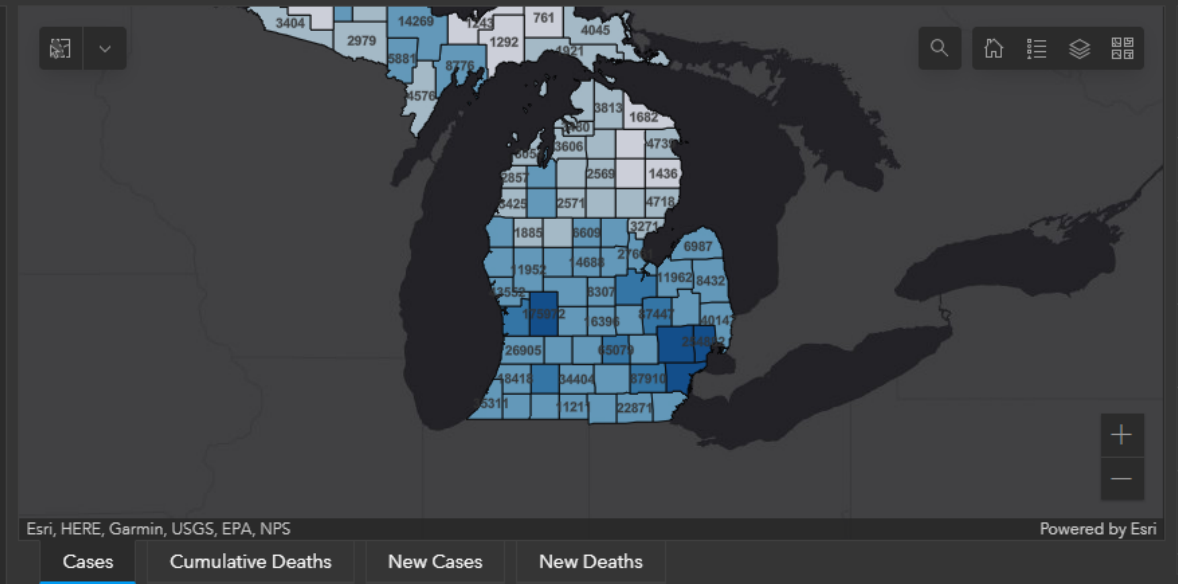
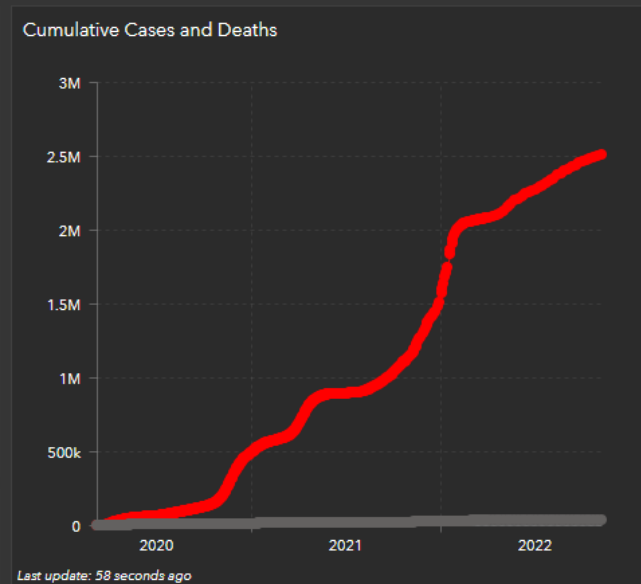
Lenawee County Vaccine Data Source

Michigan COVID-19 Summary

EFFECTIVE 11/10/2022 THIS DASHBOARD IS NO LONGER BEING UPDATED

Total Confirmed Cases
 ✳️ 2,507,475
 Michigan

Last update: 55 seconds ago



Cases by County

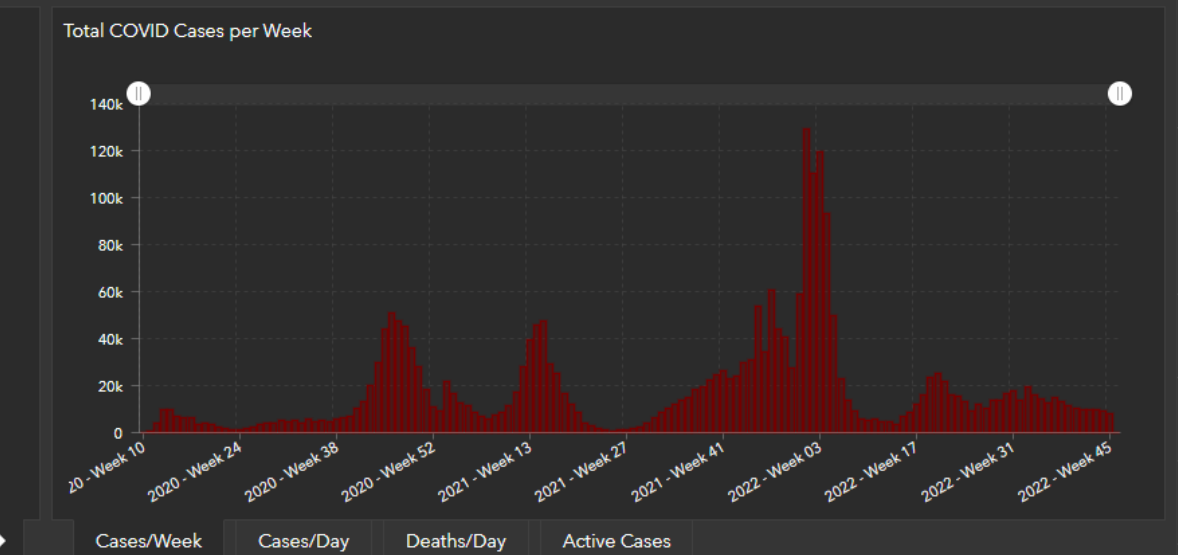
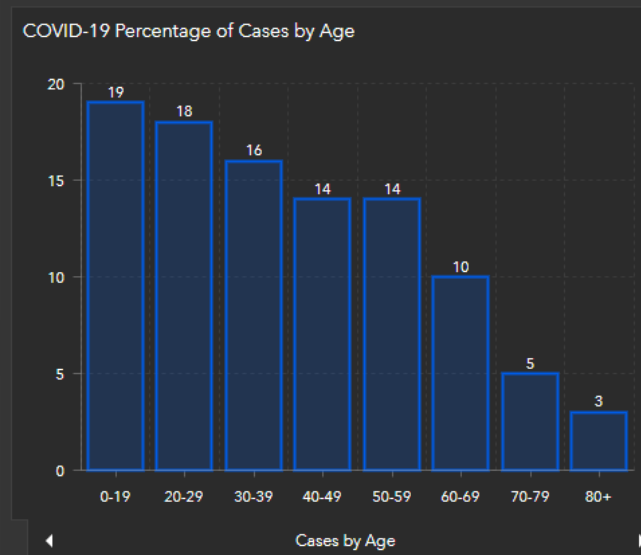
| | |
|---------------|------------------|
| 467,672 Cases | WAYNE County |
| 319,646 Cases | OAKLAND County |
| 254,882 Cases | MACOMB County |
| 175,972 Cases | KENT County |
| 87,910 Cases | WASHTENAW County |
| 87,447 Cases | GENESEE County |

Last update: 56 seconds ago

Deaths Michigan
 ❤️ 35,984

Last update: 58 seconds ago

Total Deaths | Deaths Summary



Deaths per County

| | |
|---------------|----------------|
| Deaths: 7,953 | WAYNE County |
| Deaths: 3,988 | MACOMB County |
| Deaths: 3,854 | OAKLAND County |
| Deaths: 1,702 | GENESEE County |
| Deaths: 1,462 | KENT County |
| Deaths: 970 | SAGINAW County |

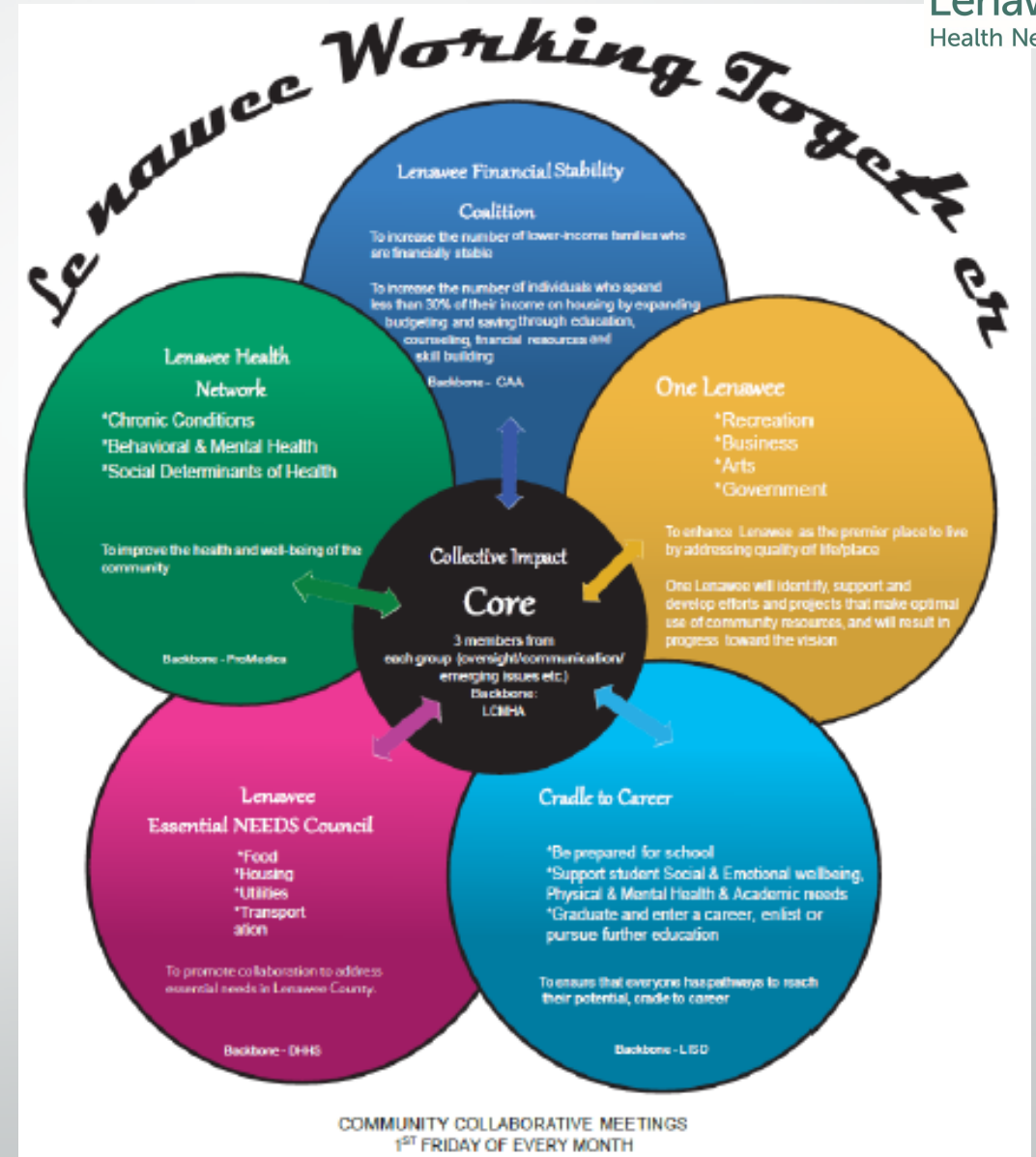
Last update: 56 seconds ago

Last Update: 11/9/22 3:00 pm

Michigan COVID-19 Sources

- Michigan.gov
 - <https://www.michigan.gov/coronavirus/>
- Lenawee County Health Department
 - <https://www.lenawee.mi.us/983/COVID-19---Vaccine>
 - <http://www.lenawee.mi.us/917/2019-Novel-Coronavirus>
 - <https://www.lenawee.mi.us/931/COVID-19-Case-Testing-Information>
 - <https://mistartmap.info/cdc-indicators?area=county%3Alenaweeinformation>

Collective Impact Core Trauma & Resilience



Guiding Principles of Trauma-Informed Care

(Adopted from Trauma-Informed Oregon's Guiding Principles of Trauma Informed Care)

6. Cultural, Historical, & Gender Issues:

The Community actively overcomes cultural stereotypes and biases, is culturally responsive, leverages the healing value of traditional cultural connections, and recognizes and addresses historical trauma.

EXAMPLES:



Spotlight Presentation

CDC Resource Demonstrations:

- [CDC PLACES: Local Data for Better Health](#)
- [CDC Social Vulnerability Index: Mapping Tool](#)

December Advocacy

- World AIDS Day: Rock the Ribbon Campaign (12/1)
- National Influenza Vaccination Week (12/5-12/9)
- Sharps Injury Prevention Awareness Month
 - International Sharps Injury Prevention Society



Agency Updates & Discussion



Thank you for joining our meeting today!

Next meeting January 12, 2023

8:00 AM – 9:00 AM

Via – Zoom

[LHN Google Drive](#)