



# Lenawee Health Network

*Mission:* To improve the health and well-being of the community.

*CHIP Goal:* Cultivate a resilient community equipped with equitable & accessible resources empowering all to reach their highest potential for health.

# Today's Agenda

Minutes – September 08, 2022

## 8:00 – 8:05 **Call to Order**

- Purpose/Mission
- Welcome & Introductions
- Inspiration & Appreciation

## 8:05 – 8:25 **Leadership Updates**

- COVID-19 Updates
- Collective Impact Core: Trauma & Resilience
  - 6 Guiding Principles
    - Empowerment, Voice, & Choice
    - Cultural, Historical, & Gender Issues
- Webinars & Resources:
  - **Webinar -**

## 8:25 – 8:40 **CHIP Strategy & Collaborations**

- Spotlight Presentation:
  - Growing Up Resilient: Adrian Dominican Sisters Resilient Communities Investment

## November Advocacy:

- [Native American Heritage Month](#)
  - [History of Native American Tribes who founded Lenawee County](#)
- [National Homeless Youth Awareness Month](#)
- [COPD Awareness](#)
- [Diabetes Awareness](#)
- [National Adoption Month](#)

## 8:40 - 8:55 **Emerging Issues**

- Agency Updates
- Open Discussion

## 9:00 **Meeting Adjourned**

- *Next Full LHN Meeting **December 08, 2022**, at 8:00 a.m. via Zoom.*
- *Next LHN Leadership Meeting **TBD**.*

## Inspiration & Appreciation

- “Being vulnerable is a risk we have to take if we want to experience connection” – Brené Brown.
- “We are like islands in the sea, separate on the surface but connected in the deep.” – William James
- Appreciation: “I appreciate Matthew Raad! Matt has been a great community partner to work with. For things from Day of HOPE to the Veteran's Day training, Matt is excited to be part of things, eager to learn, and always thinking about new things we can bring to Lenawee County. Plus he always shows up with a laugh and lots of freebies. :) Thank you, Matt for being you!”
- Please send any submissions recognizing our partners or residents for their great work to [Frank.Nagle@ProMedica.org](mailto:Frank.Nagle@ProMedica.org) for a feature in our upcoming meetings.
- Submit by the 4<sup>th</sup> Friday of each month.



# LHN LEADERSHIP

Monthly Updates

# COVID-19: Lenawee Update

## Lenawee County Active Cases

	Lab-Confirmed	Probable	Total
New Cases This Week	48	52	100
<b>Total Active Cases</b>	<b>57</b>	<b>50</b>	<b>107</b>

## Lenawee County Cumulative Cases

	Lab-Confirmed	Probable	Total	Percentage of Cumulative Cases
Male	10,463	2,843	13,306	45%
Female	12,400	3,557	15,957	55%
Discontinued from isolation	22,488	6,321	28,809	98%
Deaths	318	29	347	1%
<b>Total</b>	<b>22,863</b>	<b>6,400</b>	<b>29,263</b>	

## Lenawee County Vaccine Data

As of 11/07/2022

	Number of residents	% of eligible population
First Vaccine Dose	55,923	56.8%
Fully Vaccinated	53,270	54.1%
Boosted	28,479	53.5%

[Lenawee County Vaccine Data Source](#)

## Lenawee County Active Cases

	Lab-Confirmed	Probable	Total
New Cases This Week	67	88	155
<b>Total Active Cases</b>	<b>77</b>	<b>57</b>	<b>134</b>

## Lenawee County Cumulative Cases

	Lab-Confirmed	Probable	Total	Percentage of Cumulative Cases
Male	10,356	2,756	13,112	46%
Female	12,276	3,418	15,694	54%
Discontinued from isolation	22,242	6,088	28,330	98%
Deaths	313	29	342	1%
<b>Total</b>	<b>22,632</b>	<b>6,174</b>	<b>28,806</b>	

## Lenawee County Vaccine Data

As of 10/09/2022

	Number of residents	% of eligible population
First Vaccine Dose	55,748	56.6%
Fully Vaccinated	53,045	53.9%
Boosted	28,078	52.9%

[Lenawee County Vaccine Data Source](#)

# Michigan COVID-19 Summary

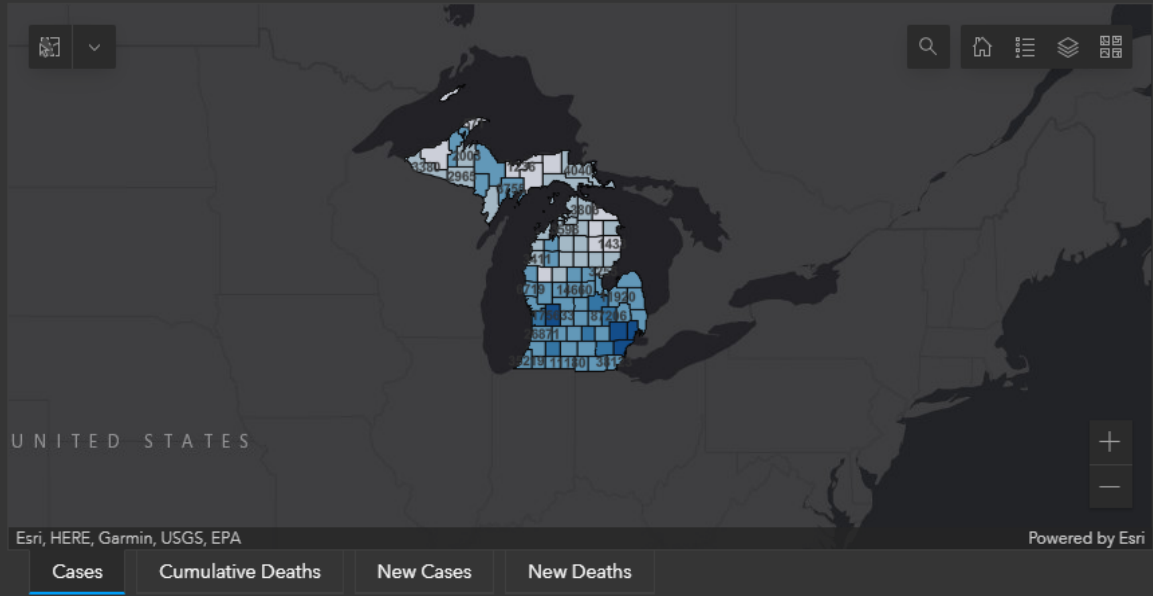
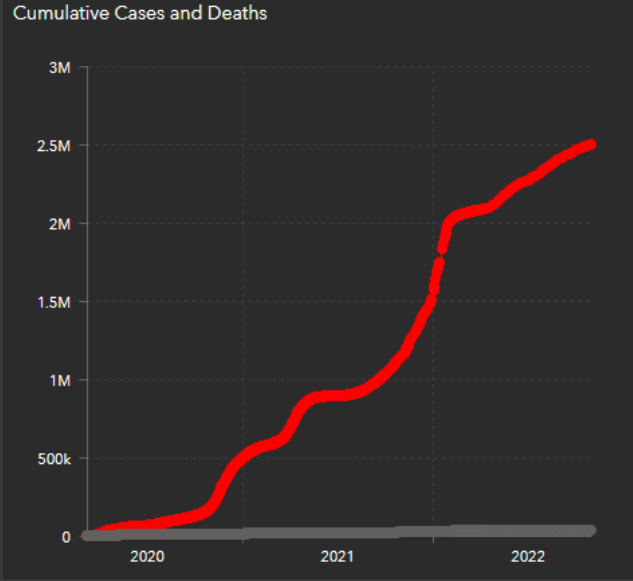
\*\*Dashboard updated Tuesday's only starting 6/19/22

Total Confirmed Cases  
 ✳️ 2,499,509  
 Michigan

Deaths Michigan  
 ❤️ 35,843

Total Deaths | Deaths Summary

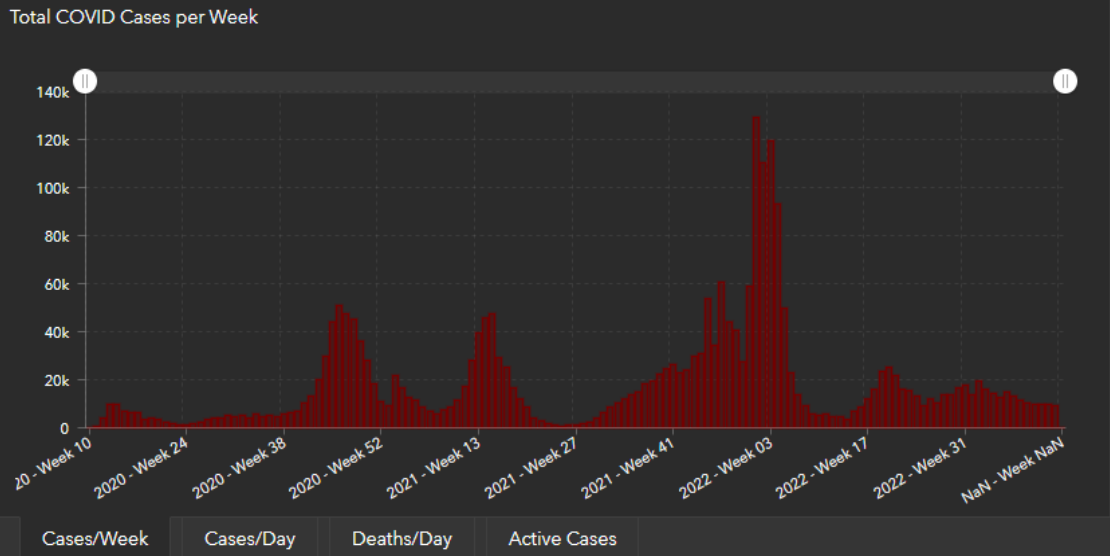
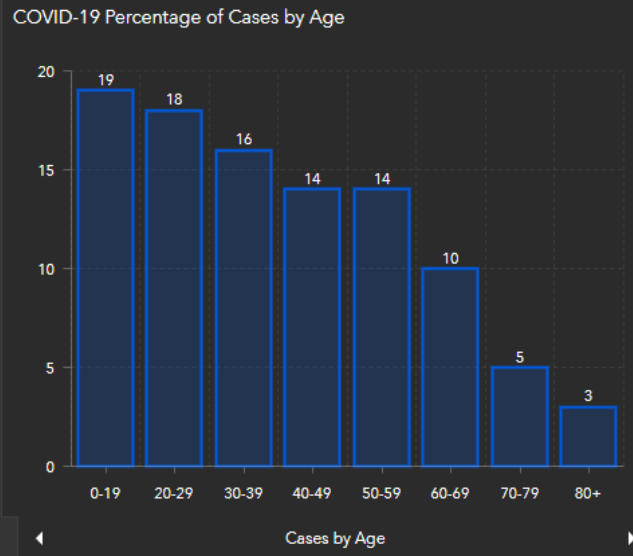
Last Update: 11/1/22 3:00 pm



Cases | Cumulative Deaths | New Cases | New Deaths

### Cases by County

465,885 Cases	WAYNE County
318,428 Cases	OAKLAND County
253,939 Cases	MACOMB County
175,633 Cases	KENT County
87,520 Cases	WASHTENAW County
87,206 Cases	GENESEE County
75,323 Cases	SAGINAW County



### Deaths per County

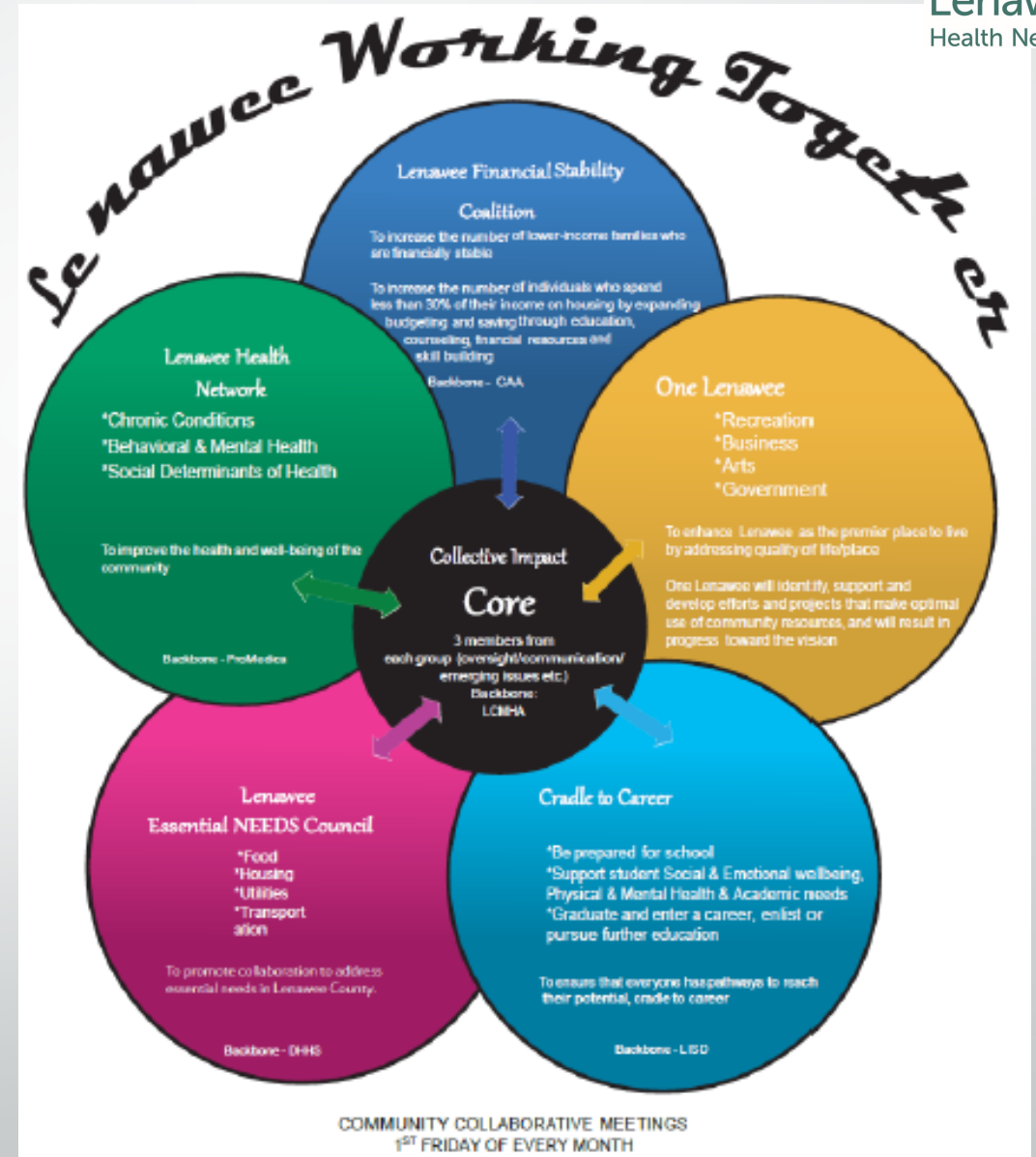
Deaths: 7,919	WAYNE County
Deaths: 3,974	MACOMB County
Deaths: 3,839	OAKLAND County
Deaths: 1,698	GENESEE County
Deaths: 1,459	KENT County
Deaths: 963	SAGINAW County
Deaths: 810	Washtenaw County

# Michigan COVID-19 Sources

- Michigan.gov
  - <https://www.michigan.gov/coronavirus/>
- Lenawee County Health Department
  - <https://www.lenawee.mi.us/983/COVID-19---Vaccine>
  - <http://www.lenawee.mi.us/917/2019-Novel-Coronavirus>
  - <https://www.lenawee.mi.us/931/COVID-19-Case-Testing-Information>
  - <https://mistartmap.info/cdc-indicators?area=county%3Alenaweeinformation>



# Collective Impact Core Trauma & Resilience





# Guiding Principles of Trauma-Informed Care

(Adopted from Trauma-Informed Oregon's Guiding Principles of Trauma Informed Care)

## 5. Empowerment, Voice, & Choice:

*Every person's experience is unique and requires an individualized approach. This builds on what individuals and communities have to offer, rather than responding to received deficits.*

EXAMPLES:

# Guiding Principles of Trauma-Informed Care

(Adopted from Trauma-Informed Oregon's Guiding Principles of Trauma Informed Care)

## 6. Cultural, Historical, & Gender Issues:

*The Community actively overcomes cultural stereotypes and biases, is culturally responsive, leverages the healing value of traditional cultural connections, and recognizes and addresses historical trauma.*



# Webinars & Resources

## *Partnering with Persons with Lived Experience*

- **Partnering with Persons with Lived Experience Lessons Learned**
  - **Webinar -**
  - This webinar provides an overview of the Partnering with Persons with Lived Experience Community Workshops, Shares teachable moments and learning opportunities that came out of the 2021 Community Workshops, and offers next step suggestions to communities looking to strengthen partnerships with persons with lived experience of homelessness

November Spotlight  
Presentation:  
*Growing Up Resilient – Adrian Dominican Sisters Resilient Communities Investment*

Press Release

**Adrian Dominican Sisters Invest \$1.5M in Initiative to Support Community Resilience in East Adrian**



ADRIAN, Mich., October 4, 2022 – ProMedica and the [Adrian Dominican Sisters](#) are pleased to announce a collaborative effort to maximize social impact in east Adrian, combining ProMedica's initiative to address health disparities with the congregation's \$1.5M "Growing Up Resilient" initiative investing in youth and their families. The investment from the Adrian Dominican Sisters aims to connect participating youth and their families with available community resources, expanding literacy and family education programs. ProMedica will serve as the fiscal manager of the new investment, building upon the pre-existing ProMedica Adrian Ebeid Neighborhood Promise.

# Adrian Dominican Sisters Resilient Community Initiative & Investment

- Adrian Dominican Sisters' new investment include:
  - 5-year, \$1.5M investment.
  - Developing life skills for youth through the social and emotional learning programs housed at the [Boys & Girls Club of Lenawee](#).
  - Connecting youth and their families with community services through a part-time community and family liaison who will work with local mentors to identify additional services needed.
  - Expanding literacy and family education programs in east Adrian. The All About Adrian Resident Coalition, local public schools, and other organizations will collaborate on the development of programs aimed at continuing and expanding literacy activities.
  - Creating an Adrian Ebeid Technology Center in east Adrian that will house the Adrian Dominican Sisters Youth Learning Center and computer lab. The center will provide learning opportunities for youth in English language skills, GED preparation and computer skills.



# November Advocacy

- Native American Heritage Month
  - History of Native American Tribes who founded Lenawee County
- National Homeless Youth Awareness Month
- COPD Awareness
- Diabetes Awareness
- National Adoption Month



# Agency Updates & Discussion





# Thank you for joining our meeting today!

Next meeting December 08, 2022

8:00 AM – 9:00 AM

Via – Zoom

[LHN Google Drive](#)