



# Lenawee Health Network

*Mission:* To improve the health and well-being of the community.

*CHIP Goal:* Cultivate a resilient community equipped with equitable & accessible resources empowering all to reach their highest potential for health.

# Today's Agenda

Minutes – September 08, 2022

## 8:00 – 8:05 Call to Order

- Purpose/Mission
- Welcome & Introductions
- Inspiration & Appreciation

## 8:05 – 8:25 Leadership Updates

- Lenawee County Riverview Terrace State of Emergency
- COVID-19 Updates
- Collective Impact Core: Trauma & Resilience
  - 6 Guiding Principles
    - Collaboration & Mutuality Definition
    - Empowerment, Voice, & Choice
- Webinars & Resources:
  - **Partnering with Persons with Lived Experience Lessons Learned**
    - Webinar - <https://youtu.be/2mBUIGsWmro>
    - [Slides](#)

## 8:25 – 8:40 CHIP Strategy & Collaborations

- Spotlight Presentation:
  - United Way Health Check Events – Laura Pipis

## October:

- [Domestic Violence Awareness Month](#)
- [Health Literacy Month](#)
- [National Breast Cancer Awareness Month](#)

## 8:40 - 8:55 Emerging Issues

- Agency Updates
- Open Discussion

## 9:00 Meeting Adjourned

- *Next Full LHN Meeting November 10, 2022, at 8:00 a.m. via Zoom.*
- *Next LHN Leadership Meeting TBD.*

## Inspiration & Appreciation

- “Put simply, lived experience means that a person has lived through the problem that is going to be solved. People who have been closest to the problem have the most experience with it, can elevate real concerns, devise the most pointed solutions, and engage community support.” “it’s the idea of building *with* not *for*” – Victor Saucedo.
- **Appreciation:**
- Please send any submissions recognizing our partners or residents for their great work to [Frank.Nagle@ProMedica.org](mailto:Frank.Nagle@ProMedica.org) for a feature in our upcoming meetings.
- Submit by the 4<sup>th</sup> Friday of each month.



# LHN LEADERSHIP

Monthly Updates

# COVID-19: Lenawee Update

## Lenawee County Active Cases

	Lab-Confirmed	Probable	Total
New Cases This Week	54	39	93
<b>Total Active Cases</b>	<b>70</b>	<b>50</b>	<b>120</b>

## Lenawee County Cumulative Cases

	Lab-Confirmed	Probable	Total	Percentage of Cumulative Cases
Male	10,327	2,717	13,044	46%
Female	12,238	3,369	15,607	54%
Discontinued from isolation	22,184	6,007	28,175	98%
Deaths	311	29	340	1%
<b>Total</b>	<b>22,565</b>	<b>6,086</b>	<b>28,651</b>	

## Lenawee County Vaccine Data

As of 10/02/2022

	Number of residents	% of eligible population
First Vaccine Dose	55,702	56.6%
Fully Vaccinated	52,988	53.8%
Boosted	27,991	52.8%

[Lenawee County Vaccine Data Source](#)

## Lenawee County Active Cases

	Lab-Confirmed	Probable	Total
New Cases This Week	87	78	165
<b>Total Active Cases</b>	<b>91</b>	<b>71</b>	<b>162</b>

## Lenawee County Cumulative Cases

	Lab-Confirmed	Probable	Total	Percentage of Cumulative Cases
Male	10,199	2,583	12,782	46%
Female	12,088	3,142	15,230	54%
Discontinued from isolation	21,890	5,625	27,343	98%
Deaths	306	29	335	1%
<b>Total</b>	<b>22,200</b>	<b>5,725</b>	<b>28,012</b>	

## Lenawee County Vaccine Data

As of 08/28/2022

	Number of residents	% of eligible population
First Vaccine Dose	55,591	56.5%
Fully Vaccinated	52,872	53.7%
Boosted	27,818	52.6%

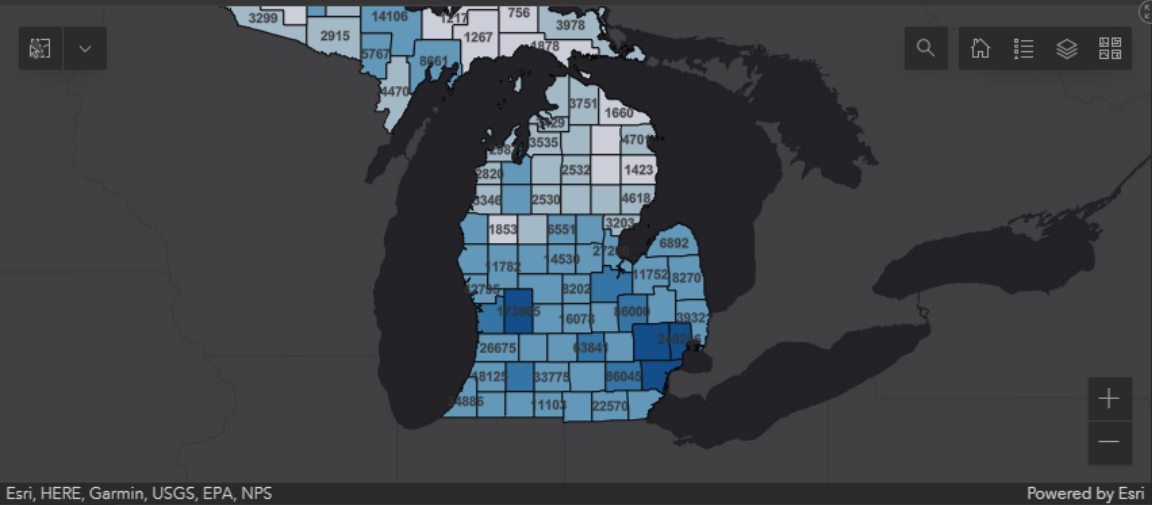
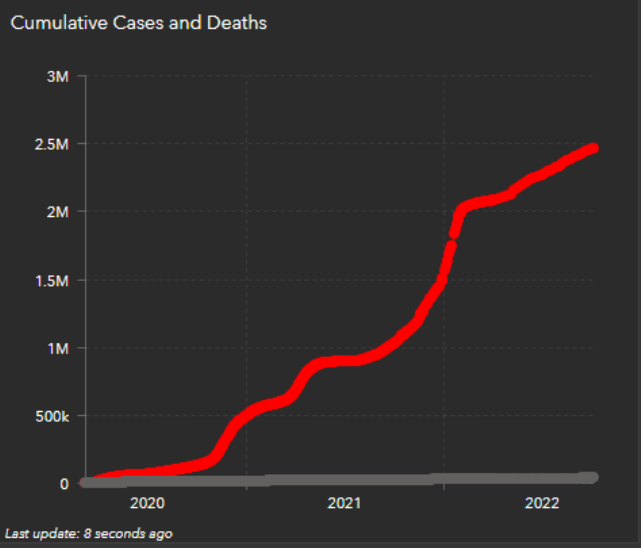
[Lenawee County Vaccine Data Source](#)

# Michigan COVID-19 Summary

\*\*Dashboard updated Tuesday's only starting 6/19/22

Total Confirmed Cases  
✳ 2,461,130  
Michigan

Last update: 4 seconds ago



#### Cases by County

457,018 Cases	<b>WAYNE County</b>
312,533 Cases	<b>OAKLAND County</b>
249,266 Cases	<b>MACOMB County</b>
173,965 Cases	<b>KENT County</b>
86,045 Cases	<b>WASHTENAW County</b>
86,000 Cases	<b>GENESEE County</b>

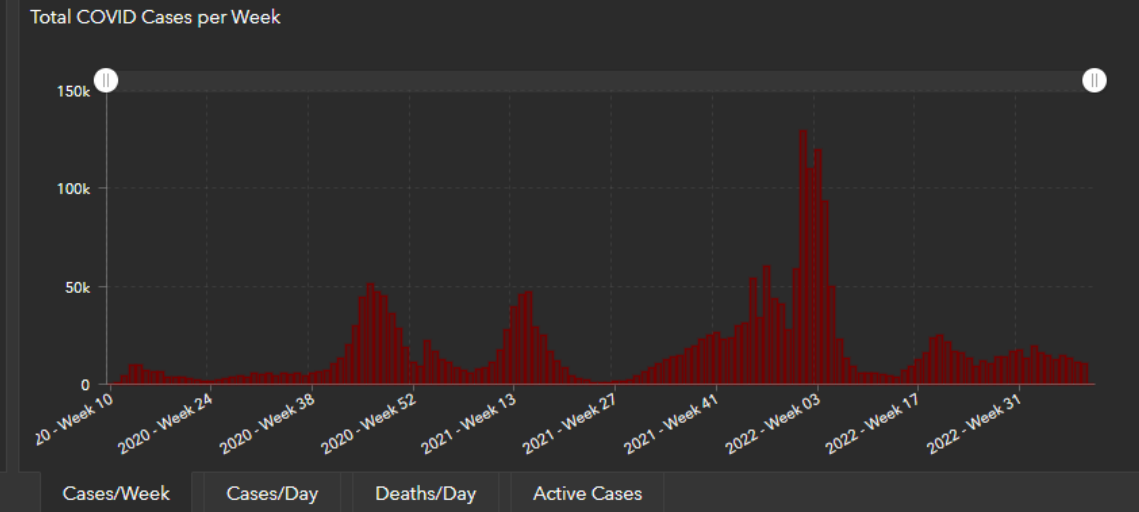
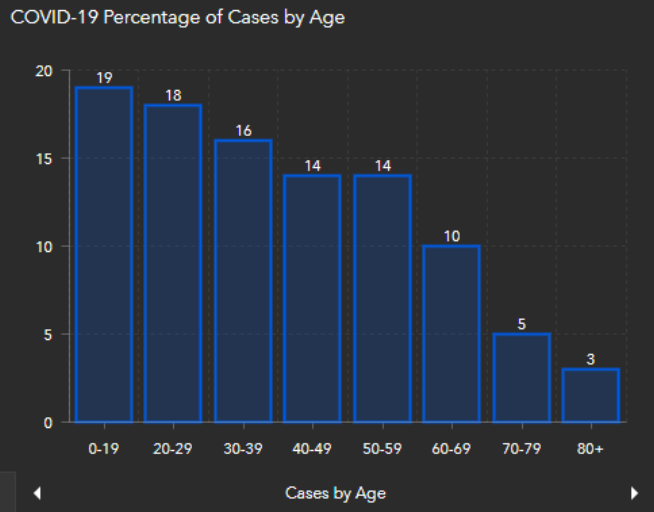
Last update: 5 seconds ago

Deaths Michigan  
35,340

Last update: 8 seconds ago

[Total Deaths](#) | [Deaths Summary](#)

Last Update: 10/4/22 3:00 pm



#### Deaths per County

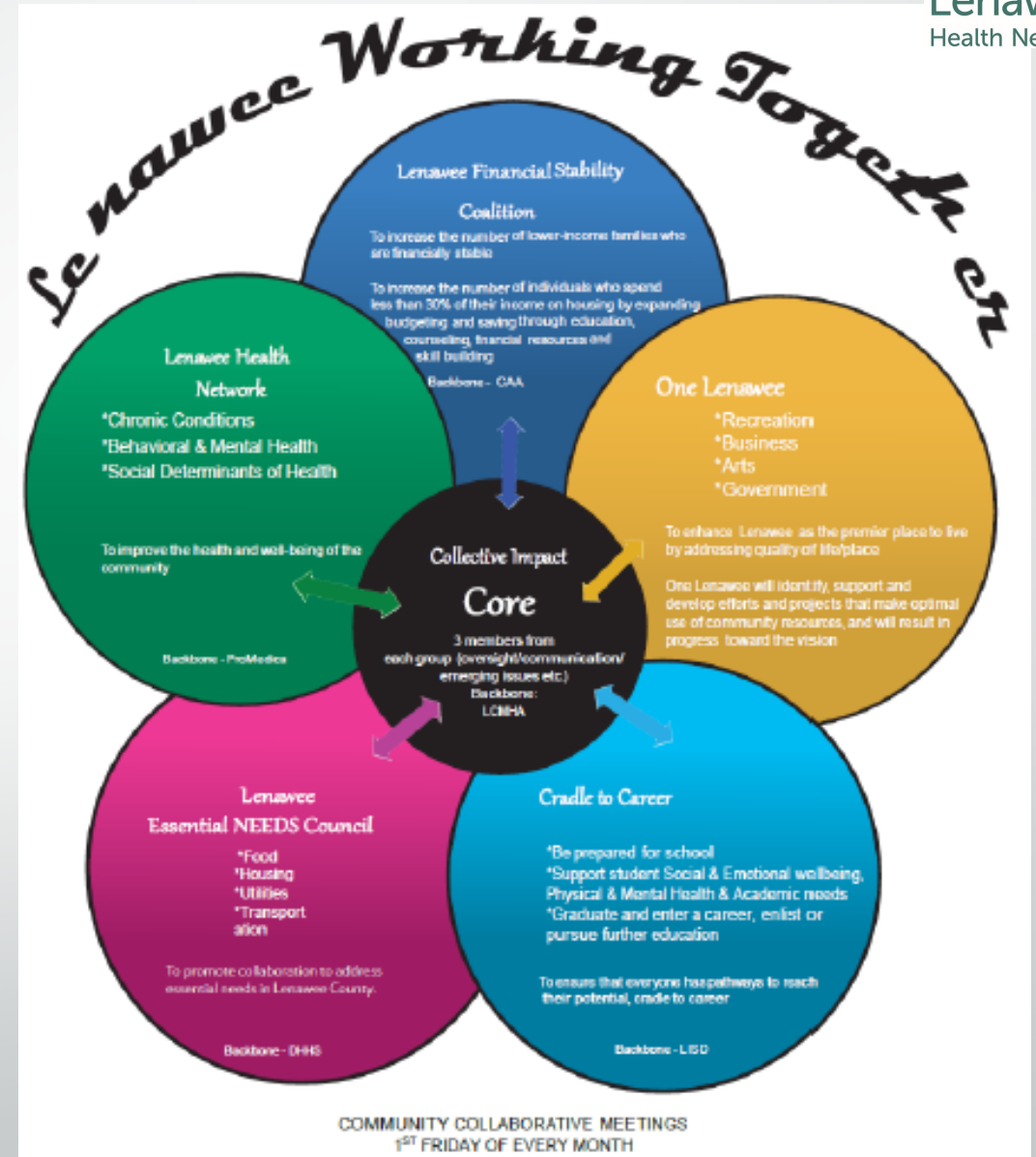
Deaths: 7,815	<b>WAYNE County</b>
Deaths: 3,922	<b>MACOMB County</b>
Deaths: 3,790	<b>OAKLAND County</b>
Deaths: 1,677	<b>GENESEE County</b>
Deaths: 1,444	<b>KENT County</b>
Deaths: 942	<b>SAGINAW County</b>

Last update: 4 seconds ago

# Michigan COVID-19 Sources

- Michigan.gov
  - <https://www.michigan.gov/coronavirus/>
- Lenawee County Health Department
  - <https://www.lenawee.mi.us/983/COVID-19---Vaccine>
  - <http://www.lenawee.mi.us/917/2019-Novel-Coronavirus>
  - <https://www.lenawee.mi.us/931/COVID-19-Case-Testing-Information>
  - <https://mistartmap.info/cdc-indicators?area=county%3Alenaweeinformation>

# Collective Impact Core Trauma & Resilience





# Guiding Principles of Trauma-Informed Care

(Adopted from Trauma-Informed Oregon's Guiding Principles of Trauma Informed Care)

## 4. Collaboration & Mutuality:

*Healing happens in relationship and in the meaningful sharing of power and decision-making.*

Examples:

# Guiding Principles of Trauma-Informed Care

(Adopted from Trauma-Informed Oregon's Guiding Principles of Trauma Informed Care)

## 5. Empowerment, Voice, & Choice:

*Every person's experience is unique and requires an individualized approach. This builds on what individuals and communities have to offer, rather than responding to received deficits.*

# Webinars & Resources

## *Partnering with Persons with Lived Experience*

- **Partnering with Persons with Lived Experience Lessons Learned**
  - **Webinar** - <https://youtu.be/2mBUIGsWmro>
  - [Slides](#)
- This webinar provides an overview of the Partnering with Persons with Lived Experience Community Workshops, Shares teachable moments and learning opportunities that came out of the 2021 Community Workshops, and offers next step suggestions to communities looking to strengthen partnerships with persons with lived experience of homelessness

The screenshot shows a Zoom meeting interface. At the top, there are controls for 'Video (4)' and 'Audio Support'. The 'Audio Support' section contains a red warning: 'Audio will be broadcast through your computer speakers' and instructions: 'Click the "Meeting" tab on the top left tool bar' and 'Select "Audio Setup Wizard" to test your computer speakers. Follow'. Below this is a 'Chat (Everyone)' section. The main video area displays a slide with a blue background and white text: 'Partnering with Persons with Lived Experience' and 'Workshop Overview & Lessons Learned'. The slide is framed by a thin green border. At the bottom of the video player, there are playback controls including play/pause, volume, and a progress bar showing '0:01 / 1:26:35'.

### Partnering with Persons with Lived Experience Lessons Learned Webinar

474 views Jan 26, 2022 This webinar was an opportunity for communities to hear lessons learned from the Partnering with Persons with Lived Experience Community Workshops. ...more

👍 3 🗨 Dislike ➦ Share ⬇ Download ⚙ Save ...

# October Spotlight Presentation *Health Check Events – United Way of Monroe & Lenawee Counties*



**Thursday, October 27, 2022**  
**8 a.m.-12 noon**  
**First United Methodist Church**  
 1245 W. Maple Ave.  
 Adrian MI 49221

## Services Available

■ <b>Adult Immunizations</b> ★	Labs/Screenings Available:
■ <b>Blood Pressure Check</b>	■ Vitamin D Screen \$15
■ <b>Height/Weight</b>	■ Colorectal Cancer Kit \$5
■ <b>Nutrition Counseling</b>	■ Hemoglobin A1C \$15
■ <b>Medication Counseling</b>	■ 22 Point Blood Panel* \$20

For accurate results, do not eat or drink for 12 hours before your test.  
 Medications MAY be taken with WATER.  
 ALL TESTING IS SUBJECT TO AVAILABILITY.

Questions? Call 734.242.1331

### Sponsored by

- United Way of Monroe/Lenawee Counties
- ProMedica Charles and Virginia Hickman Hospital
- Family Medical Center of Michigan
- Michigan Dept. of Health & Human Services
- Lenawee County Health Department
- First Presbyterian church of Tecumseh—Volunteers
- First Presbyterian church of Adrian—Volunteers



★ MI-AVP (Michigan Adult Vaccine Program—previously titled MI-VRP). Publicly funded vaccine program that offers a limited number of vaccines for adults 19 years of age and older who have no insurance or who have insurance that does not cover any of the cost of the vaccine.  
 \* Must be in a certain risk group for disease to qualify for vaccine.  
 • Rx, Tiden, Hep A & B, Shingles

# Agency Updates & Discussion



# Thank you for joining our meeting today!

Next meeting November 10, 2022

8:00 AM – 9:00 AM

Via – Zoom

[LHN Google Drive](#)